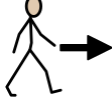
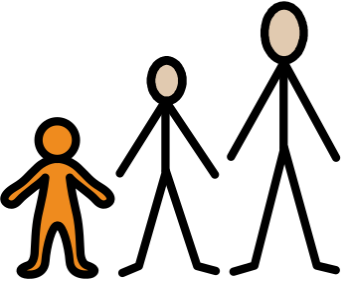

 Children's to  Adult  Healthcare

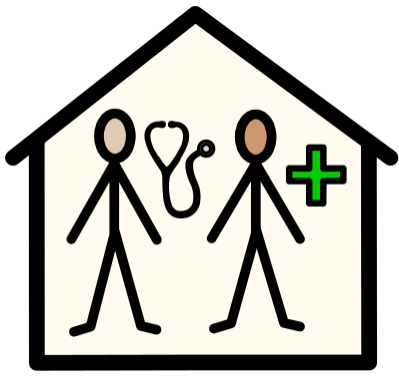

(Transition)

  When you get older you will move from children's health services to adult health services.

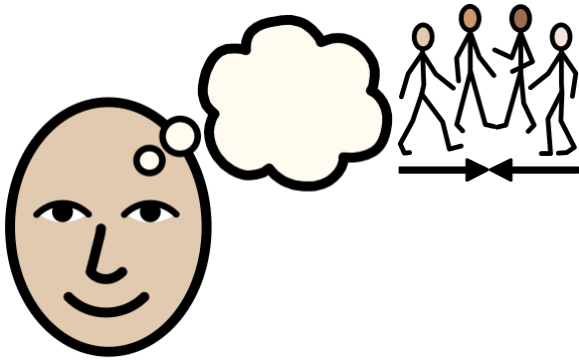
The move from a children's to adult health services is called transition.



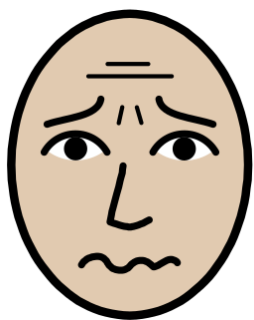
The move will happen after your 16th birthday.



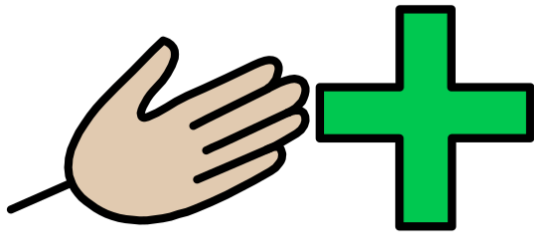
The new clinic or ward might look different.



Ask if you can to meet the new doctors,
nurses and other staff before your move.



It is normal to feel nervous when you move to somewhere new
or talk to new staff.



The new Dr's and Nurses will talk to you and your family to find out how to help you.



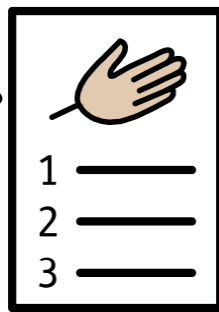
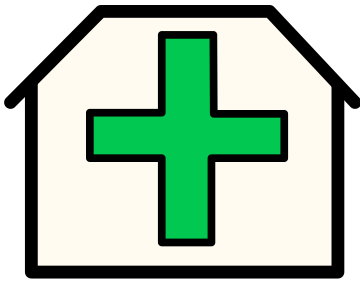
Your family doctor (GP) will take over your care from the children's doctors in the community.



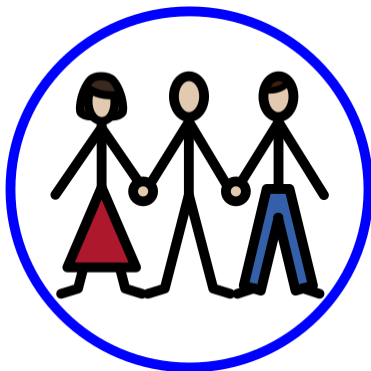
Your GP will offer you an Annual Health check from 14 years and every year after that.



Your health care team can help you to make a plan for the move to adult services.



A Hospital Passport will help the staff who to know what is important to you and what your needs are.



Your parent/carer can still help you to make decisions about your care and treatment